

Vetus 50

Veterinary Diagnostic Ultrasound System

Reliable image, continuous growth



LinkedIn Facebook Instagram

Q | Search Mindray Animal Medical

www.mindrayanimal.com
service@mindrayanimal.com

P/N:ENG-Vetus 50-210285X10P-20230613
©2023 Shenzhen Mindray Animal Medical Technology Co., LTD. All rights reserved.



Enjoy the Incredible Images

ZST+ Platform

The ZST+ platform is an extraordinary innovation, representing an ultrasound evolution. Transforming ultrasound metrics from conventional beam-forming to channel data based processing. It delivers exceptional image quality for infinite imaging solutions with non-stop improvements.

ComboWave transducer with 3T technology

Compared with traditional transducers, ComboWave transducers utilize a new type of composite piezoelectric material to dramatically optimize the acoustic spectrum and reduce acoustic impedance. Further integrated with Mindray Animal Medical's unique 3T technology, the ComboWave transducers allow you to experience outstanding performance with extreme image resolution and uniformity.

Vetus 50

Mindray Animal Medical's amazing new practical veterinary ultrasound Vetus 50 provides excellent experience for veterinarians.

Equipped with Mindray Animal Medical's next-generation ultrasound platform ZST+ and ComboWave transducer with 3T technology, Vetus 50 offers accurate performance for scanning of different animals. Meanwhile, rich built-in learning tools can make veterinarians' learning more convenient and efficient.

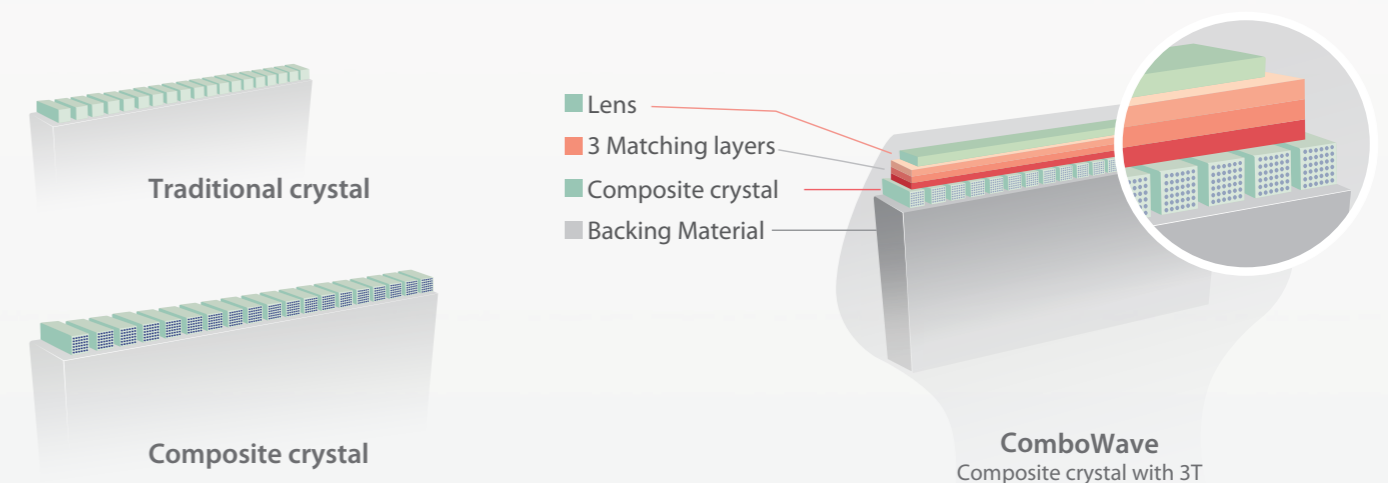
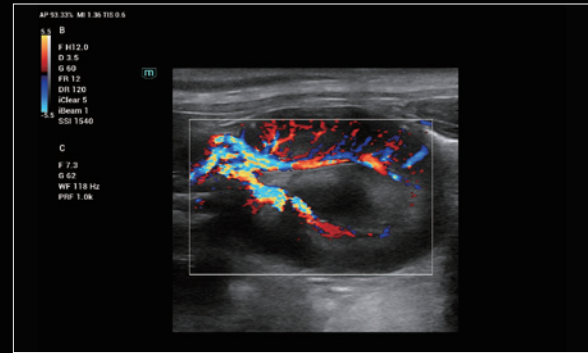
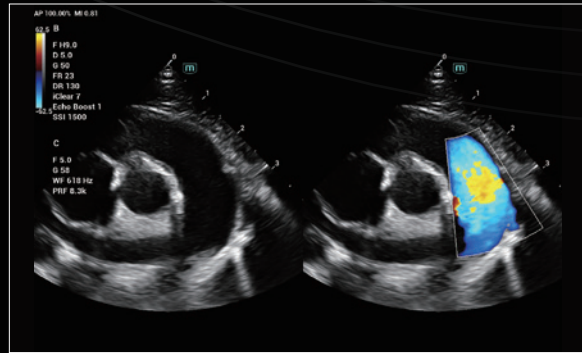


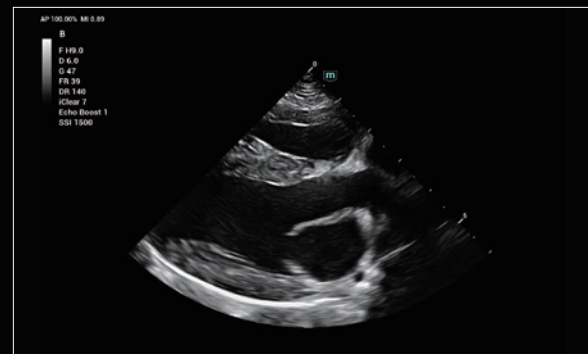
Image Gallery



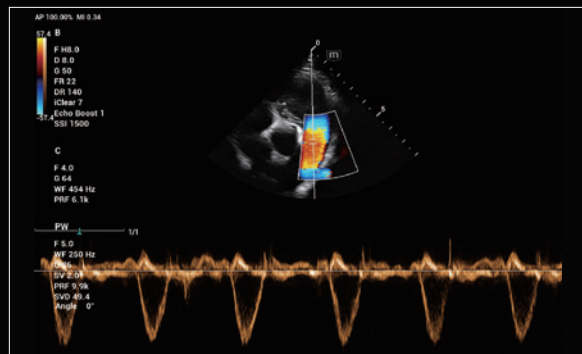
Canine Kidney Vessel



Feline Pulmonary Artery



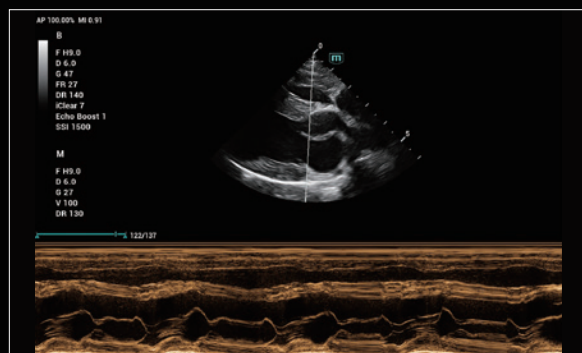
Canine Heart



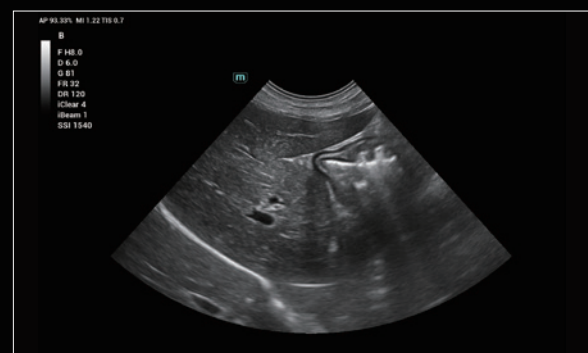
Canine Pulmonary Artery (PW)



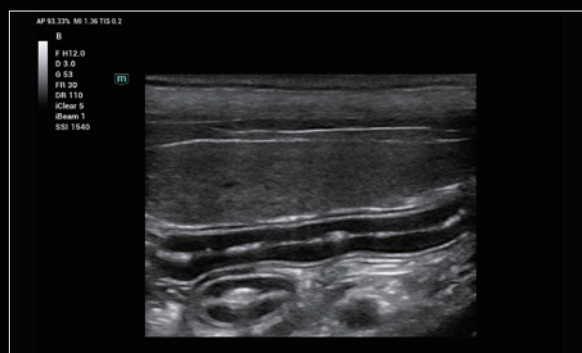
Canine Spleen Vessel



Canine Heart (M)



Canine Liver

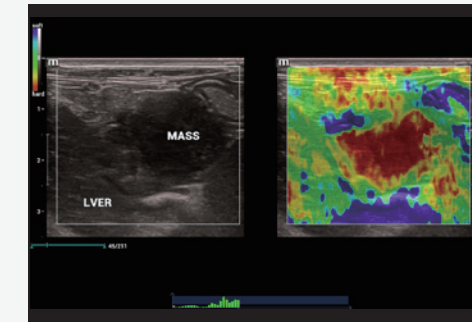


Canine Spleen and Intestine

Enjoy the Professional Functions

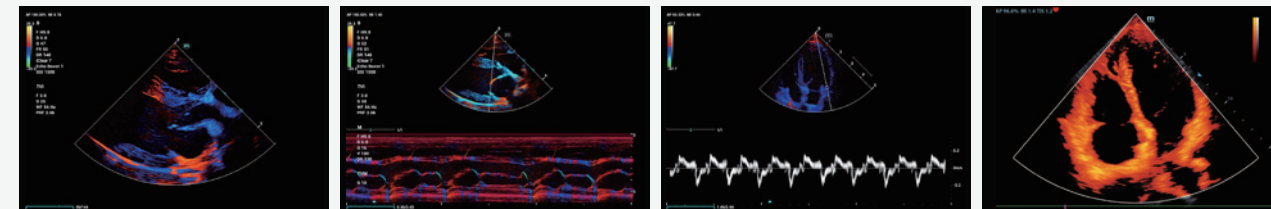
Natural Touch Elastography

Mindray Animal Medical's patented Natural Touch Elastography technology provides an accurate and reproducible assessment of soft tissues' elastic properties and stiffness.



Tissue Doppler Imaging

Support 4 TDI imaging modes, including TVI, TEI, TVD, and TVM, providing multiple ways for assessing cardiac myocardial motion.



TVI

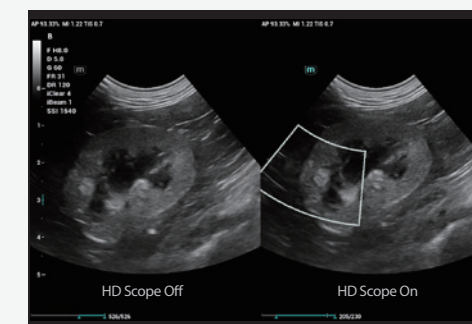
TVM

TVD

TEI

HD Scope

By processing channel data collected by the ZST+ platform, HD Scope can improve the detail information and image contrast on specific area maximally.



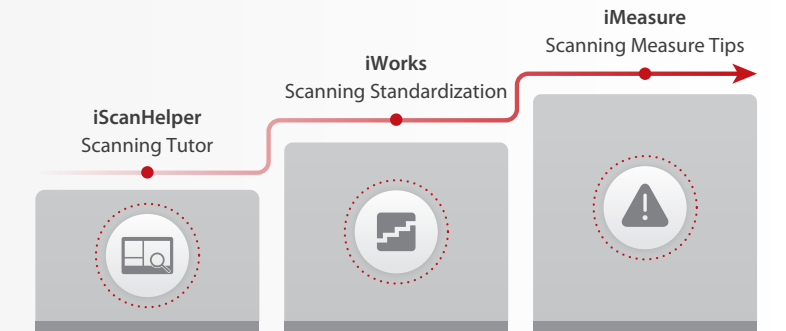
Smart Calc

Press one key to encircle the boundary of the lesion and get measurements.



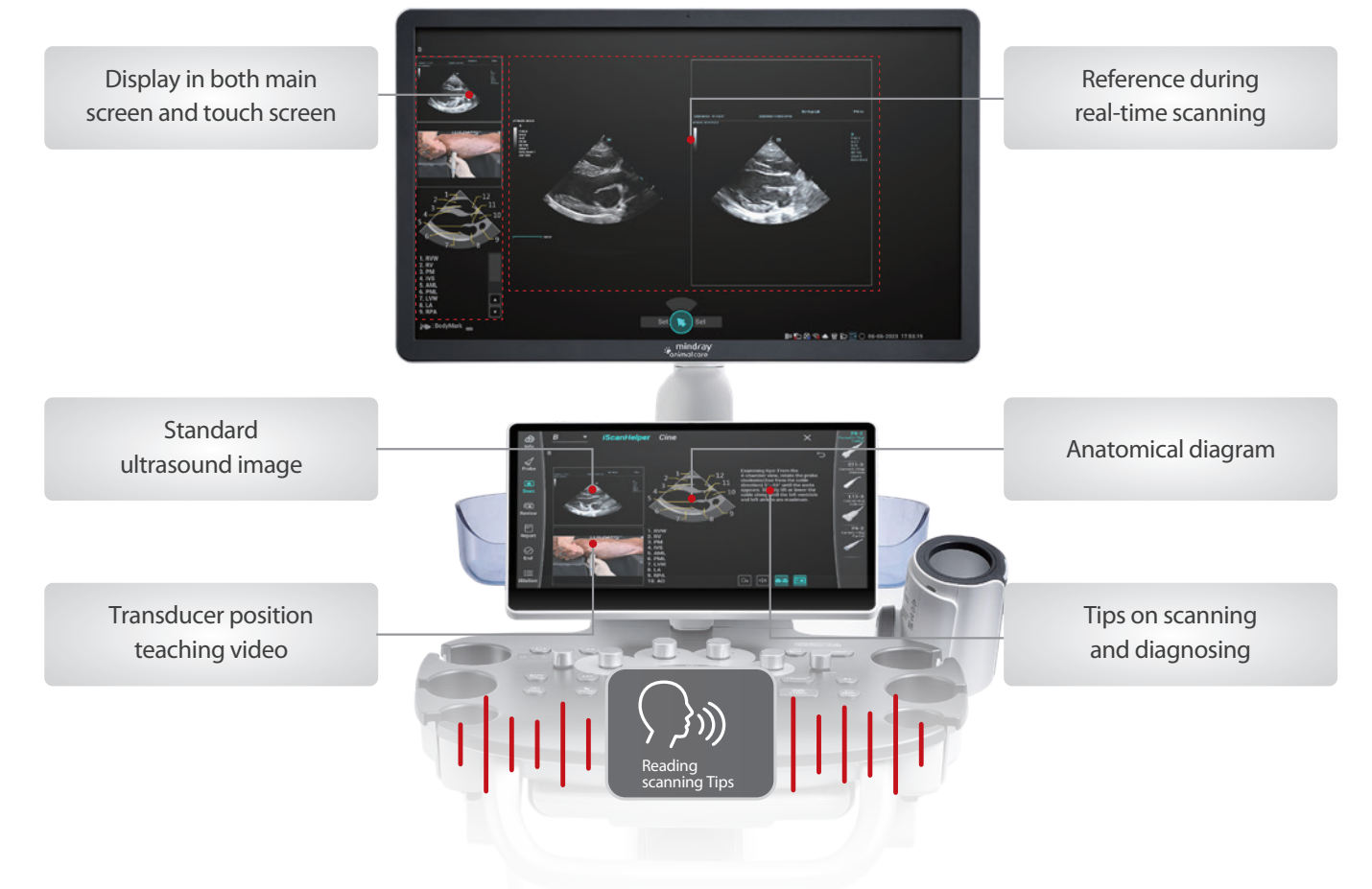
Enjoy the Comprehensive Learning Tools

Vetus 50 has a series of learning tools to help veterinarians shorten the learning curve, and quickly master ultrasound scanning skills.



iScanHelper

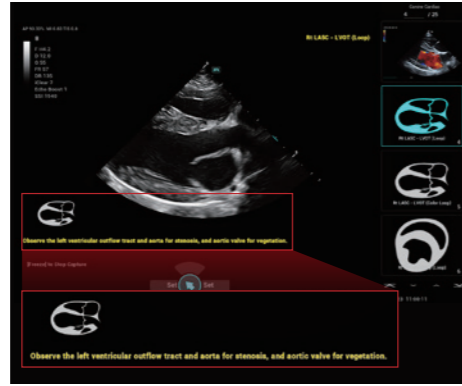
iScanHelper, a helpful built-in tutorial for both beginners and experienced professionals, providing 100+ comprehensive standard ultrasound image, transducer position teaching video, and anatomical diagram.



iWorks

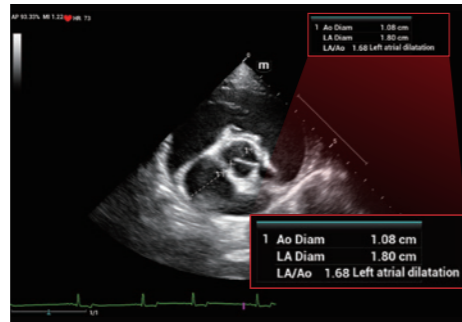
Include a wide range of standard protocols for different clinical applications.
By using this function, veterinarians can be more proficient in scanning, without missing any sections.

- 1 Scan a section according to tips
- 2 Automatically set up imaging modes
- 3 Automatically insert annotation and body mark
- 4 Automatically activate measurements
- 5 Automatically go to the next section
- 6 Finish the exam



iMeasure

Suggest potential or suspected clinical conditions immediately on the screen if the resulting values are out of the predefined range.



Enjoy the Innovative Designs

iLight

Ultrasound scanning rooms are usually dark, but veterinarians occasionally need light to take objects or read papers, iLight can provide appropriate light to help veterinarians complete the operations conveniently.



Easy to move

Vetus 50 offers great flexibility, Whether you prefer crouching, standing, or moving the system between rooms, Vetus 50 can adapt to your requirements seamlessly.

