

VetiGen P50

Veterinary Portable X-ray Unit

Innovate Ahead, Lead Simplicity

companion animal



🔍 Search Mindray Animal Medical



LinkedIn Facebook Instagram

www.mindrayanimal.com
service@mindrayanimal.com

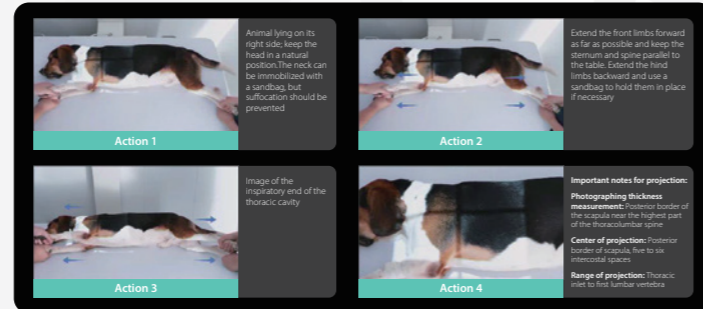
©2026 Shenzhen Mindray Animal Medical Technology Co., LTD. All rights reserved.
P/N:ENG-VetiGen P50-210285X4P-20260423



Easier Operation, Higher Efficiency

iShotHelper

Professional positioning guidance, friendly to new vets, greatly reduce the operation threshold.



Precise Tilt & Angle Display

The machine tilts freely, with real-time angle shown on screen for accurate shooting setup.

Foot Switch & Hand Switch

- Standard equipped with hand switch & foot switch dual control.
- Enabling single-person to complete the shooting and greatly improving shooting efficiency.



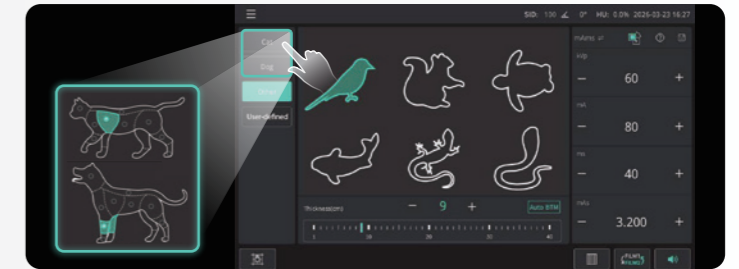
Touchscreen

- 10"capacitive touchscreen for simple operation.
- Designed with inclination for easy observation without glare interference.

Professional Design, Safe Protection

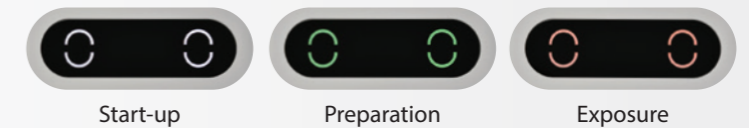
APR

- Built-in cat/dog APR, with customizable settings for exotic pets.
- Automatically sets mA/ms and mAs based on body thickness.



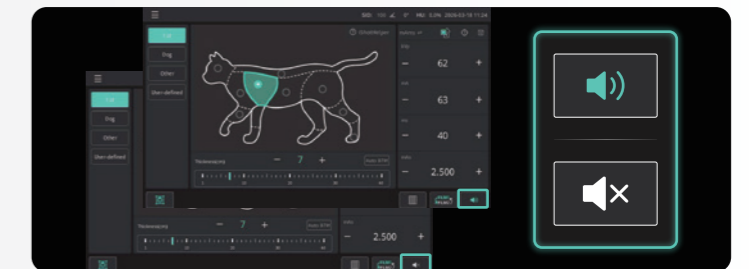
Multi-color Status Indicators

The exposure indicator light displays multiple states, clearly distinguishing the three states of start-up, preparation and exposure, making the operation process safer.



Silent Operation

Silent operation for animal comfort and reduced stress, improving the shooting experience.



Technical Specifications

Technical Specifications	
Construction	Monoblock unit with touch screen High-frequency technology
Max Power Output (kW)	5 kW
Tube Voltage (kV)	40~125 kV, 1 kV per step
Tube Current (mA)	12.5~100 mA
Current time product (mAs)	0.16~160 mAs
Loading time (ms)	1.6 ms~8000 ms
Working Frequency	400 kHz
Focus spot (mm)	0.6 mm / 1.8 mm
Total Filtration	2.9mm Al collimator included
Size (L/W/H)	395 x 285 x 245 mm
Weight (kg)	15.8±0.2 kg
Foot switch cable (m)	3 m
AUTO-BTM	Option